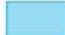
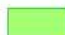



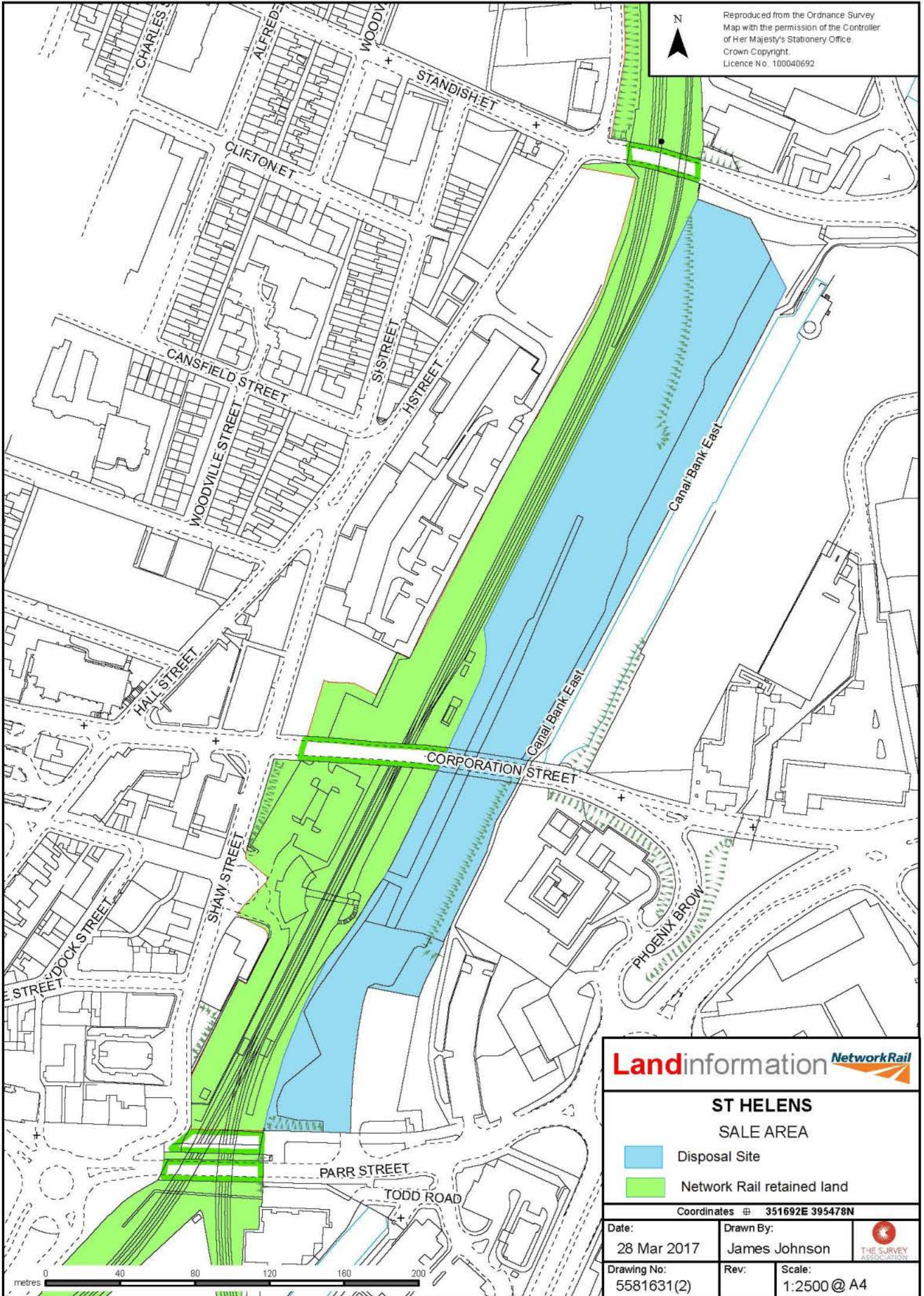
**Landinformation** 

**ST HELENS  
SALE AREA**

-  Disposal site
-  Network Rail retained land

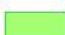
Coordinates @ 351692E 395478N

Date: 28 Mar 2017	Drawn By: James Johnson	
Drawing No: 5581631(1)	Rev:	




**Landinformation** 

**ST HELENS  
SALE AREA**

-  Disposal Site
-  Network Rail retained land

Coordinates @ 351692E 395478N

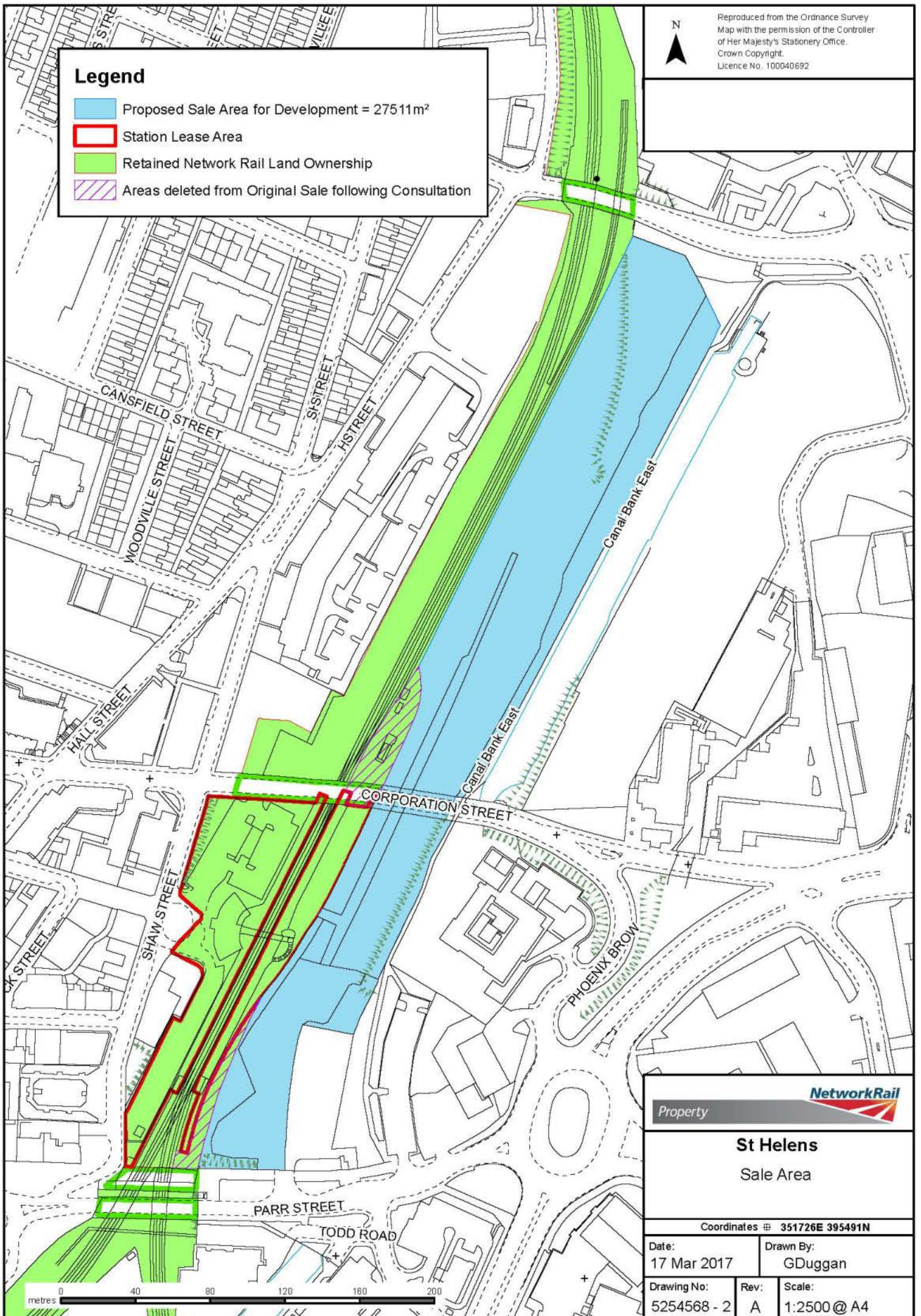
Date: 28 Mar 2017	Drawn By: James Johnson	
Drawing No: 5581631(2)	Rev:	



Reproduced from the Ordnance Survey Map with the permission of the Controller of Her Majesty's Stationery Office. Crown Copyright. Licence No. 100040692

### Legend

- Proposed Sale Area for Development = 27511m<sup>2</sup>
- Station Lease Area
- Retained Network Rail Land Ownership
- Areas deleted from Original Sale following Consultation



Property

**St Helens**  
Sale Area

Coordinates  $\#$  351726E 395491N

Date:  
17 Mar 2017

Drawn By:  
GDuggan

Drawing No:  
5254568 - 2

Rev:  
A

Scale:  
1:2500 @ A4

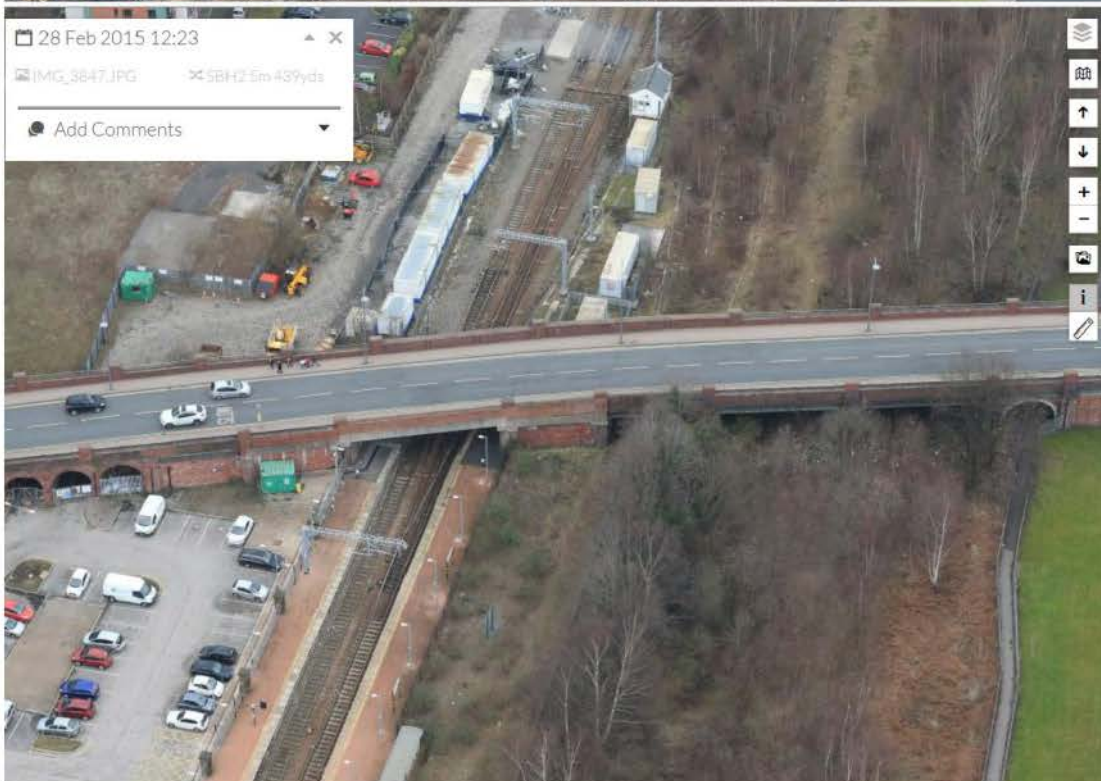
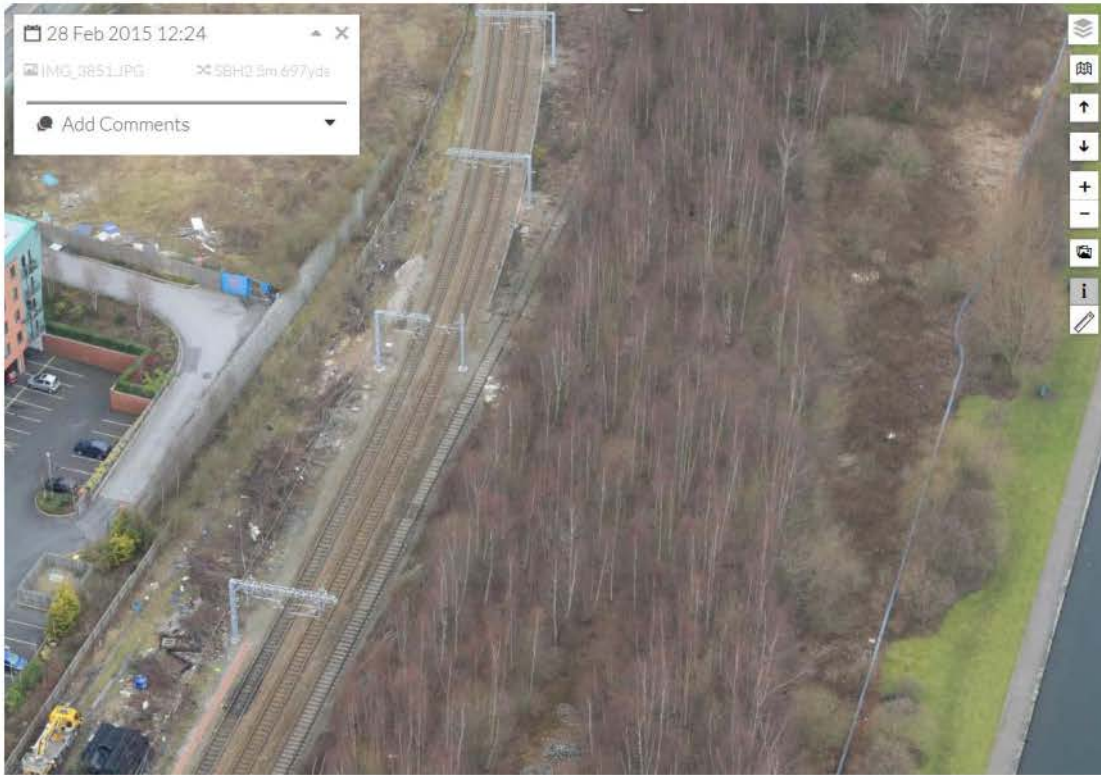




Figure 1 - 20 September 2016 12:44pm



Figure 2 - 20 September 2016 12:45pm



Figure 3 - 20 September 2016 12:46pm



Figure 4 - 20 September 2016 12:47pm



Figure 5 - 20 September 2016 12:49pm



Figure 6 - 20 September 2016 12:50pm



Figure 7 - 20 September 2016 12:52pm



Figure 8 - 20 September 2016 12:53pm



Figure 9 - 20 September 2016 12:55pm  
Damaged fence



Figure 10 - 20 September 2016 12:56pm



Figure 11 - 20 September 2016 01:01pm



Figure 12 - 20 September 2016 01:01pm



Figure 13 - 20 September 2016 01:02pm



Figure 14 - 20 September 2016 01:04pm



Figure 15 - 20 September 2016 01:08pm



Figure 16 - 20 September 2016 01:12pm